



981, Dhiraj Niwas. Nr. Mahakali Hotel Laheripura New Road.  
Vadodara - 390 001. Contact: (M) 98259 52159  
Visit: [www.pumphouse.co.in](http://www.pumphouse.co.in)  
Email: [pumphouse98@gmail.com](mailto:pumphouse98@gmail.com)



## ROTARY GEAR PUMPS ("SEG" SERIES)



### FEATURES

- All positive displacement rotary gear pumps are self priming pumps with suction lift of 5 meters at mean viscosity and speed 1440 rpm.
- The SEG series of SURGE pump has modified profile of teeth to give accurate discharge within the pressure range.
- The helical gear design delivers constant volume without any pulsation. It also reduces internal slippage and gives high volumetric efficiency.
- Compact in size and highly economical.
- All these are self lubricated pumps recommended for use where the liquid to be transferred has lubrication properties. Hence the bearing are lubricated by the pumping fluid and do not need any external lubrication.
- Easy maintenance due to availability and interchangeability of spares.
- All SURGE gear pumps are designed and assembled with close tolerances to reduce the mechanical losses, thus it consumes less power and operates at higher efficiency.

### APPLICATION

"SURGE" rotary gear pumps are useful for handling following viscous and semi viscous liquid,

- Clean lube oil, Castor oil, Coconut oil, Ground nut oil, Cotton seed oil and Hydraulic oil.
- All kind of vegetable oils.
- Paints & Varnish.
- All kind of fish and animal oils.
- Soap solutions.
- Sugar molasses and syrups.
- Printing Ink.
- Glycerin, Glycol and Glue.
- Viscous Chemical.

Rotary gear pumps are widely used in Paper Mills, Refineries, Steel Mills and Textile industries.

## RANGE

Pressure	: Up to 10 kg/cm <sup>2</sup>
Discharge	: 10 LPM to 500 LPM
Pipe size	: 1/4" BSP to 3"BSP

## MATERIAL OF CONSTRUCTION

Pump Body	: C.I.Gr.FG 200
Back Cover with R.V.	: C.I.Gr.FG 200
Gland Cover	: C.I.Gr.FG 200
Rotor Assembly	: Gear - SAE 8620, Shaft - EN 8
Bush	: Sintered Bronze
Oil Seal	: Nitrile Rubber
Rotor Shaft key	: M.S.
Packing	: Prespane Paper



981, Dhiraj Niwas. Nr. Mahakali Hotel Laheripura New Road.  
Vadodara - 390 001. Contact: (M) 98259 52159  
Visit: [www.pumphouse.co.in](http://www.pumphouse.co.in)  
Email: [pumphouse98@gmail.com](mailto:pumphouse98@gmail.com)





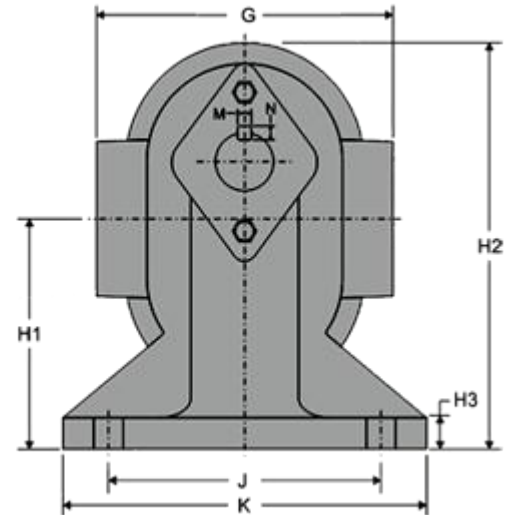
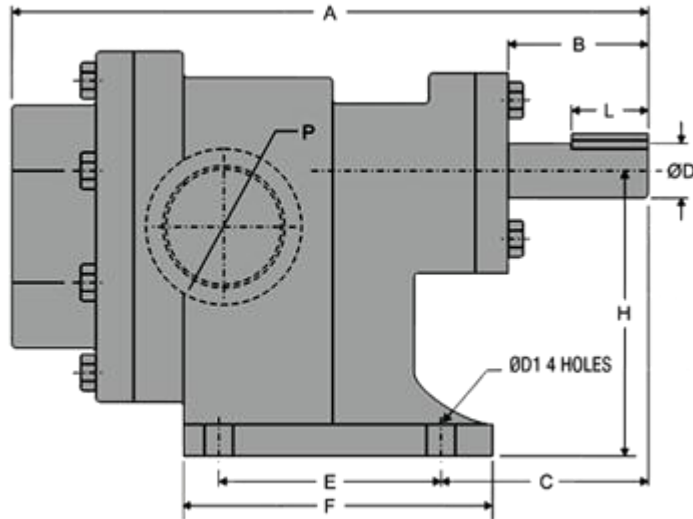
## PERFORMANCE CHART OF ROTARY GEAR PUMPS

MODEL	PIPE SIZE IN MM SUC. X DEL.	DISCHARGE		PRESSURE IN Kg / cm <sup>2</sup>										NET WEIGHT Kgs.
				1	2	3	4	5	6	7	8	9	10	
		LPM	M <sup>3</sup> /Hr	MOTOR REQUIRED IN HP (SPEED 1440 RPM)										
SEG - 10	10 x 10	10	0.6	0.25	0.25	0.25	0.25	0.50	0.50	0.50	0.50	0.75	0.75	2.400
SEG - 15	15 x 15	20	1.2	0.50	0.50	0.50	0.50	0.75	0.75	0.75	0.75	1.00	1.00	2.800
SEG - 20	20 x 20	30	1.8	0.50	0.50	0.75	0.75	0.75	1.00	1.00	1.00	1.50	1.50	5.000
SEG - 25	25 x 25	50	3.0	0.50	0.75	0.75	1.00	1.00	1.50	1.50	1.50	2.00	2.00	6.000
SEG - 40	40 x 40	110	6.6	1.50	2.00	3.00	3.00	3.00	3.00	5.00	5.00	5.00	5.00	11.000
SEG - 50	50 x 50	225	13.5	3.00	3.00	5.00	5.00	5.00	5.00	7.50	7.50	7.50	12.50	18.500
SEG - 65	65 x 65	350	21.0	5.00	7.50	7.50	10.00	10.00	10.00	12.50	12.50	15.00	15.00	29.000
SEG - 80	80 x 80	500	30.0	7.50	10.00	10.00	12.50	12.50	15.00	15.00	17.50	20.00	20.00	45.000



981, Dhiraj Niwas. Nr. Mahakali Hotel Laheripura New Road.  
 Vadodara - 390 001. Contact: (M) 98259 52159  
 Visit: [www.pumphouse.co.in](http://www.pumphouse.co.in)  
 Email: [pumphouse98@gmail.com](mailto:pumphouse98@gmail.com)





## OVER ALL DIMENSIONS OF ROTARY GEAR PUMPS

MODEL	A	B	C	E	F	G	J	K	L	ØD	ØD1	M	N	H	H1	H2	H3	P
SEG - 10	127	31	38	40	72	75	70	90	20	12.7	9.5	5	5	63	52	92	10	¼" B.S.P.
SEG - 15	146	31	48	40	72	75	70	93	20	12.7	9.5	5	5	63	50	92	12	½" B.S.P.
SEG - 20	182	43	64	45	88	96	85	112	20	15	9.5	5	5	80	66	118	12	¾" B.S.P.
SEG - 25	195	47	64	50	90	101	93	126	30	17	11	6	6	90	73	132	12	1" B.S.P.
SEG - 40	246	54	78	70	122	112	115	140	30	22	11	6	6	112	90	160	15	1½" B.S.P.
SEG - 50	305	80	90	100	156	150	140	185	40	25	13.5	8	7	132	105	192	19	2" B.S.P.
SEG - 65	360	94	110	120	185	165	155	185	40	28	14	8	7	145	114	215	21	2½" B.S.P.
SEG - 80	400	85	101	155	225	200	175	220	50	35	16	10	10	165	130	250	25	3" B.S.P.



981, Dhiraj Niwas. Nr. Mahakali Hotel Laheripura New Road.  
 Vadodara - 390 001. Contact: (M) 98259 52159  
 Visit: [www.pumphouse.co.in](http://www.pumphouse.co.in)  
 Email: [pumphouse98@gmail.com](mailto:pumphouse98@gmail.com)

